



Main Features

The interior plate is a typical lightweight panel with sandwich structure. Various interior plate can be done by diversified plate collocation and professional processing technology, this plate has characteristic of high bending strength, heat insulation, sound insulation, good fireproof performance and high resistance. it is a environmental friendly and energy saving material, has been widely applied in all kinds of ship cabin



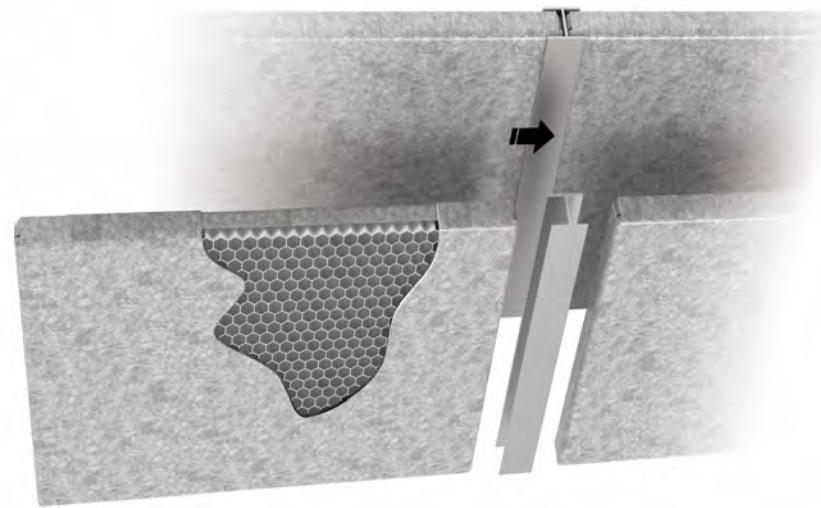
Type A Aluminum Honeycomb Composite Panel



| Type | LHS-25 | LHS-50 |
|-------------------|---|---------------------------------------|
| Thickness | 25mm | 50mm |
| Fire Class | C | C |
| Dimension | Standard Width: 550mm Maximum Length: 2400mm | |
| Weight | 6.5kg/m ² | 7.8kg/m ² |
| Sound Reduction | 29.6dB | 32.6dB |
| Core Materials | 0.06*5*23.4mm (Aluminum Honeycomb) | 0.06*5*48.4mm (Aluminum Honeycomb) |
| Surface Treatment | 0.8mm PVC film aluminum plate surface | |
| Tolerance | W±0.5mm H±3mm T±0.5mm | |

Type C Aluminum Honeycomb Composite Panel

SUS Honeycomb Composite Panel



| Type | LHS-25 | LHS-50 |
|-------------------|---|---------------------------------------|
| Thickness | 25mm | 50mm |
| Fire Class | C | C |
| Dimension | Standard Width: 550mm Maximum Length: 2400mm | |
| Weight | 6.4kg/m ² | 7.7kg/m ² |
| Sound Reduction | 29.6dB | 32.6dB |
| Core Material | 0.06*5*23.4mm (Aluminum Honeycomb) | 0.06*5*48.4mm (Aluminum Honeycomb) |
| Surface Treatment | 0.8mm PVC film aluminum plate surface | |
| Tolerance | W±0.5mm H±3mm T±0.5mm | |

| Type | HZFL-05 |
|-------------------|---|
| Thickness | 10mm |
| Fire Class | C |
| Dimension | Standard Width: 550mm Maximum Length: 2400mm |
| Weight | 12.0Kg/m ² |
| Sound Reduction | 30.5dB |
| Core Material | 0.06*5*8mm (Aluminum Honeycomb) |
| Surface Treatment | PVC Coated with SUS |
| Tolerance | W±0.5mm H±3mm T±0.5mm |

Type A Aluminum Honeycomb Composite Ceiling Panel



| Type | HZFL-T-07 |
|-------------------|---|
| Thickness | 25mm |
| Fire Class | C |
| Dimension | Standard Width: 550mm Maximum Length: 2400mm |
| Weight | 6.8Kg/m ² |
| Sound Reduction | 29.8dB |
| Core Material | 0.06*5*23.4mm (Aluminum Honeycomb) |
| Surface Treatment | 0.8mm PVC film aluminum plate surface |
| Tolerance | W±0.5mm H±3mm T±0.5mm |

Micro Perforated Aluminum Honeycomb Composite Ceiling Panel



| Type | HZFL-T-08 |
|-------------------|------------------------------|
| Thickness | 1.5mm |
| Fire Class | C |
| Dimension | Standard Size: 600*600mm |
| Weight | 4.1Kg/m ² |
| Sound Reduction | 30.1dB |
| Core Material | Can add Rockwool |
| Surface Treatment | Electrostatic Powder Coating |
| Tolerance | W±0.5mm H±3mm T±0.5mm |



RESEARCH & DESIGN

In strict accordance with the national standard principle of "specification unified, safe and reliable, durable, simple and practical"

SHAPE & STRUCTURE

The furniture plate is continuing use of stable structure of woodiness. Each parts could be connected by various ways, which could make sure that it is easy to dismantle, install and maintain.



PROCESSING & PRODUCTION

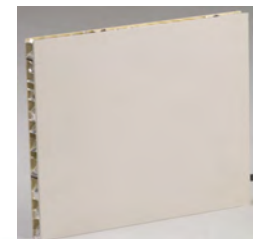
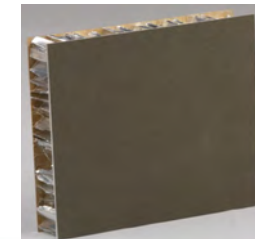
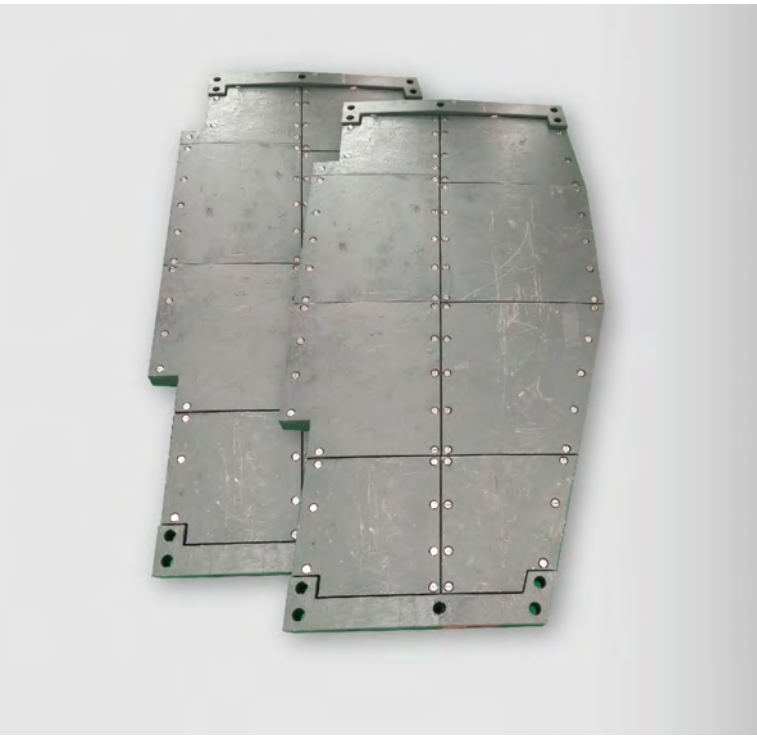
The material of plate is aluminum alloy, so high quality materials and advanced processing technology could ensure product durability. Our products could protect the plate from being of shape, which is often happened on artificial board. Good bending characteristic can be used in all kinds of furniture.

LIGHTWEIGHT CERAMIC ALUMINUM HONEYCOMB PANEL

PERFORMANCE CHARACTERISTICS

- ◆ The ceramic rete is a new surface treatment technology with green and environment protective material, which is also our own technology in China.
- ◆ It has characteristic of better wear resistance, corrosion resistance, heat-strike resistance and electrical insulation properties
- ◆ It has the features of light weight, high strength, good flatness and diverse choice on surface color.
- ◆ The plate surface is clean, no wrinkle, no bubble, no fillet and uneven, adhesion bonding is flat and firm without cracking off problem, the plates are processed by modular construction

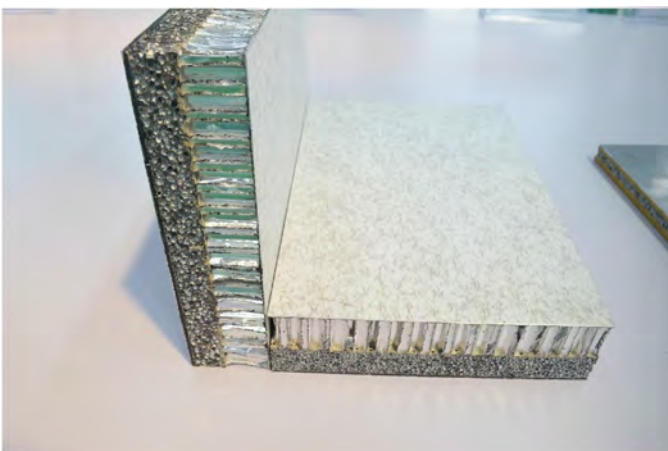
| TECHNICAL PARAMETERS | Item | Standard Values | Measured Value | Standard |
|----------------------|---------------------------------|-----------------|-------------------------|-----------------|
| | 5% NaCl Salt Spray Test | -- | 1008h No Corrosion Spot | GB/T10125-2012 |
| | Plane Tensile Strength(Mpa) | ≤1.9 | 4.03 | GJB130.4-86 |
| | Plane Compression Strength(Mpa) | ≤1.7 | 3.11 | GJB130.5-86 |
| | Plane Shear Strength(Mpa) | ≤1.0 | 1.64 | GJB130.6-86 |
| | Microhardness HV0.05 | ≤231.8 | 980 | GB/T4340.1-2009 |



HIGH-STRENGTH SOUND INSULATION PANEL

PERFORMANCE CHARACTERISTICS

High-Strength Sound Insulation Plate is done by special processing technology, and the new materials has the multiple characteristics of metal, damping materials and porous body. It has good physical and chemical properties, mechanical properties and 100% recovery, all of these characteristics make that it has wide prospect of application. It can be used in high-speed train, city railway train, ship building, automobiles, high-speed rail, etc. High-strength sound insulation plate's stiffness (flexural strength) is very high, like the flexural strength of granite. Compared with traditional wooden floor and aluminum honeycomb floor, it is high strength, light weight, shock insulation, not burning, not collapse. With the characteristics of the porous, the plate's absorbed energy is remarkable, so that the application is wider than the metal materials. The penetrability is good in liquid and air medium. It also has good sound-absorbing ability.



COMPOSITE DAMPING PANEL

PERFORMANCE CHARACTERISTICS

Composite Damping Plate can efficiently reduce the collision from mechanical parts in the process of meshing surface vibration and noise, can effectively avoid the remote detection of radar and sonar, fundamentally improve the stealth level, and has become the research hot spot.



PRODUCT INTRODUCTION

The furniture plate is using the advantage of woodiness board type furniture, with structure stability.

Each parts could be connected by various ways, which could make sure that it's easy to dismantle, install and maintain.

PERFORMANCE CHARACTERISTICS

LIGHT WEIGHT & HIGH STRENGTH

Compared with traditional materials, composite materials products density is just 1.8. Compared with metal, density is very light, just a quarter of the density of steel. And its specific strength is the same as metal, even more than steel and copper alloy. The tensile strength of the composite materials products can reach 4000 kg/cm².

FLEXIBLE DESIGN & EASILY FORMING

Composite materials products don't have the restriction of shape, many different items can be done by some simple molds. It can reduce the molding cycle and improve work efficiency.

GOOD CORROSION RESISTANCE

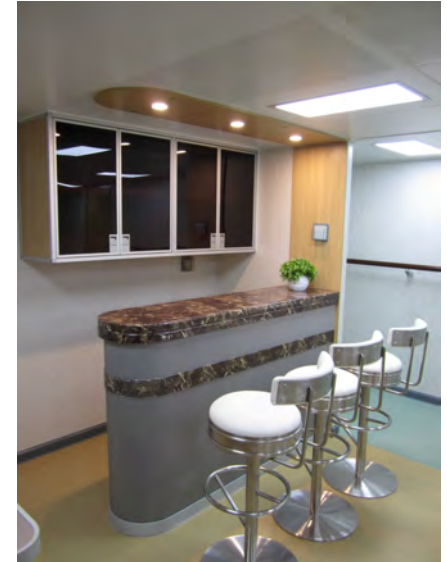
It can avoid rusting, mildewing and corrosion for more than 10 years.

GOOD ELECTRICAL INSULATING PERFORMANCE & HIGH TRANSMISSION

Based on good electrical insulating properties and transmission of radar, it could be used in appliances and military equipment.

HEAT-RESISTING & GOOD LIGHT PENETRATION

The specific heat of composite material products is 2-3 times than the metal, its thermal conductivity is just 0.24, only 1% of the metal thermal conductivity, and it has good insulation performance.



SANITARY UNIT SYSTEM



PRODUCT INTRODUCTION

Lightweight sanitary unit system is made of high quality of the composite materials, It is an independent unit modular systems, can realize the function of wash basin, shower and toilet within the limited space.

PERFORMANCE CHARACTERISTICS

DIY Combination: Individual design and module production
 Light Weight & High Strength: The overall weight is less than 200 kg, resistant to impact strength is more than 300 kg/m²
 Durable In Use: It can avoid rusting, mildewing and corrosion for more than 10 years
 Easy Installation: It can be moved easily, and easy disassemble and assemble

| | |
|------------------------|--|
| Type | HZF-S-WXT -01 |
| Structure | 6 module assembled type/ Unitary |
| Interior Collocation | Sink, toilet/urinal, Storage Rack, Mirror Cabinet, Toilet Roll Holder, Garbage Can, Extraction Ventilation, Lighting, Electric Switch, Non-skid Floor, Hand Grip |
| External Configuration | Indicating Lock, Handle, Signs |
| Power Source | 220 V /380V |
| Drainage Way | Directly Drained Lavatory /Foam Plugging / Centralized Treatment |
| Use-Pattern | Squat / Sitting |
| Optional Configuration | Shower Unit, Heating Unit, Mist Trap, Appearance of Optimization |