

FIREMAN'S OUTFIT



HXXF-18 FIRE HOSE

Standard: Conform to SOLAS 1974 and the latest amendment, also conform to GB6246.

Out Material: Polyester filament

Lining material: NBR

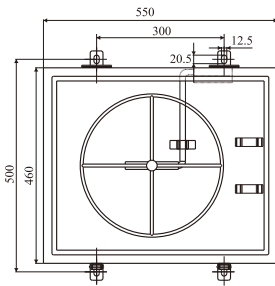
Pressure: 1.0Mpa/1.3Mpa/1.5Mpa

Certificate: CCS/EC

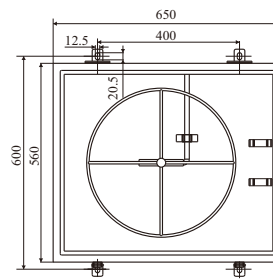
Specification: DN40/DN50/DN65



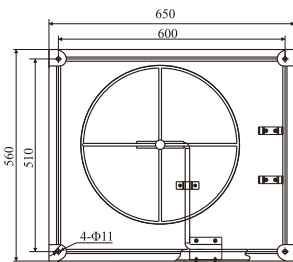
HXXF-19-1 HOSE BOX
size: 550mm*460mm*190mm
Material: Stainless steel



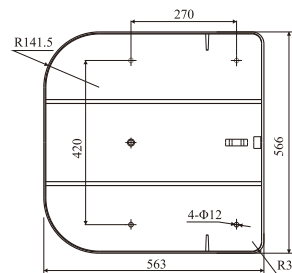
HXXF-19-2 HOSE BOX
size: 650mm*560mm*190mm
Material: Stainless steel



HXXF-19-3 HOSE BOX
size: 650mm*560mm*190mm
Material: FRP



HXXF-19-4 HOSE BOX
size: 578mm*579mm*143mm
Material: FRP



**HXXF-20 HYDRANT****Material:** Brass**Certificate:** CCS/ZY**Specification:** DN40/DN50/DN65**HXXF-21 INTERNATIONAL SHORE CONNECTION****Material:** Brass**Working pressure:** 0.1Mpa**Bolts and nuts:** M16 * 50mm * 4**Specification:** DN50/DN65**Certificate:** CCS/ZY**INTERNATIONAL SHORE CONNECTION BOX****size:** 260mm*240mm*210mm**Material:** FRP**INTERNATIONAL SHORE CONNECTION BOX****size:** 265mm*245mm*235mm**Material:** Stainless steel**INTERNATIONAL SHORE CONNECTION BOX****size:** 265mm*245mm*235mm**Material:** Iron

FIREMAN'S OUTLET



CCS

EC

HXXF-22 WATER FOG/WATER COLUMN DUAL-USE NOZZLE

Application: Mainly used for extinguishing an oil fire, according to the distance from the flame, easy to adjust for the two kinds of mist and water spray, so that faster extinguishing effect.

Standard: Conform to GB8181-2005 standard and 1974 International Convention for the Safety of Life at Sea.

Specification	IMPA code	Working Pressure	Flow range	Injection range	Portable containers volume	Standby vessel volume	Certificate
DN40	33 08	2-16bar	$(8 \pm 10\%)L/S$	20m	$\geq 20L$	$\geq 20L$	CCS/EC
DN50							
DN65							



HXXF-23 CHINESE TYPE HOSE COUPLINGS

Application: Used to connect hoses

Specification	Standard	Material	Certificate
DN40	GB 12514.2-2006	Brass	CCS
DN50			
DN65			



HXXF-24 CHINESE TYPE BLANKING CAPS

Application: Suitable for use in seawater.

Specification	Standard	Material
DN40	GB 12514.2-2006	Brass
DN50		
DN65		



HXXF-25 CHINESE TYPE SPANNER FOR HOSE COUPLING

Application: Used to connect hose and nozzle.

Specification	Standard	Material
DN40	GB 12514.2-2006	Brass
DN50		
DN65		


HXXF-26 STORZ HOSE COUPLINGS
Application: used to connect hose and nozzle, Suitable for use in seawater

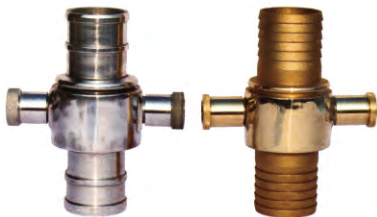
Specification	Size			Standard	Material	Certificate
	$\varphi A = \text{mm}$	$\varphi B = \text{mm}$	L = mm			
DN50	66	52	55	DIN	Brass	CCS
DN65	81	65	58			


HXXF-27 STORZ ADAPTER JOINT
Application: Suitable for use in seawater

Specification	Size		Standard	Material	Certificate
	$\varphi A = \text{mm}$	G =			
DN50	66	2"	DIN	Brass	CCS
DN65	81	1 1/2"			


HXXF-28 STORZ BLANKING CAPS
Application: Suitable for use in seawater

Specification	Size	Standard	Material	Certificate
	$\varphi A = \text{mm}$			
DN40	66	DIN	Brass	CCS
DN50	81			


HXXF-29 JOHN MORRIS TYPE HOSE COUPLINGS
Application: Used to connect hoses

IMPA code	Specification	Size	Standard	Material
		$\varphi A = \text{mm}$		
33 08 59	DN40	1 1/2"	BS 336	brass aluminum alloy
33 08 60	DN50	2"		
33 08 61	DN65	2 1/2"		


HXXF-30 JOHN MORRIS CAP
Application: Suitable for use in seawater

Specification	Size	Standard	Material
	$\varphi A = \text{mm}$		
DN40	1 1/2"	BS 336	brass
DN50	2"		
DN65	2 1/2"		

FIREMAN'S OUTLET



HXXF-31 MACHINO TYPE HOSE COUPLINGS

Application: used to connect hose and nozzle.

IMPA code	Specification	Size	Standard	Material
		φA=mm		
33 08 55	DN40	1 1/2"	JIS B-9911	brass aluminum alloy
33 08 56	DN50	2"		
33 08 57	DN65	2 1/2"		

HXXF-32 MACHINO TYPE CAP

Application: Suitable for use in seawater



Specification	Size	Standard	Material
DN40	1 1/2"	JIS B-9911	brass
DN50	2"		
DN65	2 1/2"		



HXXF-33 ANSI HOSE COUPLINGS

Application: used to connect hose and nozzle.

Specification	Size	Standard	Material
	φA=mm		
DN40	1 1/2"	NH(NSTT)	brass
DN50	2"		
DN65	2 1/2"		

HXXF-34 ANSI CAP

Application: Suitable for use in seawater



Specification	Size	Standard	Material
DN40	1 1/2"	NH(NSTT)	brass
DN50	2"		
DN65	2 1/2"		



HXXF-35 SPANNER FOR ANSI HOSE COUPLING

Application: Used to connect hose and nozzle.

Specification	Standard	Material
DN40	NH(NSTT)	Brass
DN50		
DN65		


HXXF-36 NAKAJIMA HOSE COUPLINGS
Application: used to connect hose and nozzle, Suitable for use in seawater

IMPA code	Specification	Size			Material	Approvals
		$\varphi A = \text{mm}$	$\varphi B = \text{mm}$	L=mm		
330851		61	38	45	Brass	CCS
330852		74	52	55		
330853		92	64	58		


HXXF-37 NAKAJIMA ADAPTER JOINT
Application: Suitable for use in seawater

IMPA code	Specification	Size		Material
		$\varphi A = \text{mm}$	G=	
330851	DN40	61	1 1/2"	Brass
330852	DN50	74	2"	
330853	DN65	92	2 1/2"	


HXXF-38 NAKAJIMA SPANNER BLANKING CAPS
Application: Suitable for use in seawater

IMPA code	Specification	Size	Material
		$\varphi A = \text{mm}$	
330851	DN40	61	Brass
330852	DN50	74	
330853	DN65	92	


HXXF-39 SPANNER FOR NAKAJIMA HOSE COUPLING
Application: used to connect hose and nozzle.

Specification	Size			Material
	$\varphi A = \text{mm}$	$\varphi B = \text{mm}$	L=mm	
DN40	61	38	45	Brass
DN50	74	52	55	
DN65	92	64	58	